

# FLORIDA DESIGN

THE MAGAZINE FOR FINE INTERIOR DESIGN & FURNISHINGS

VOLUME 17#3

## DINING IN GRAND STYLE



# NESTLED BETWEEN FLORIDA'S WATERS



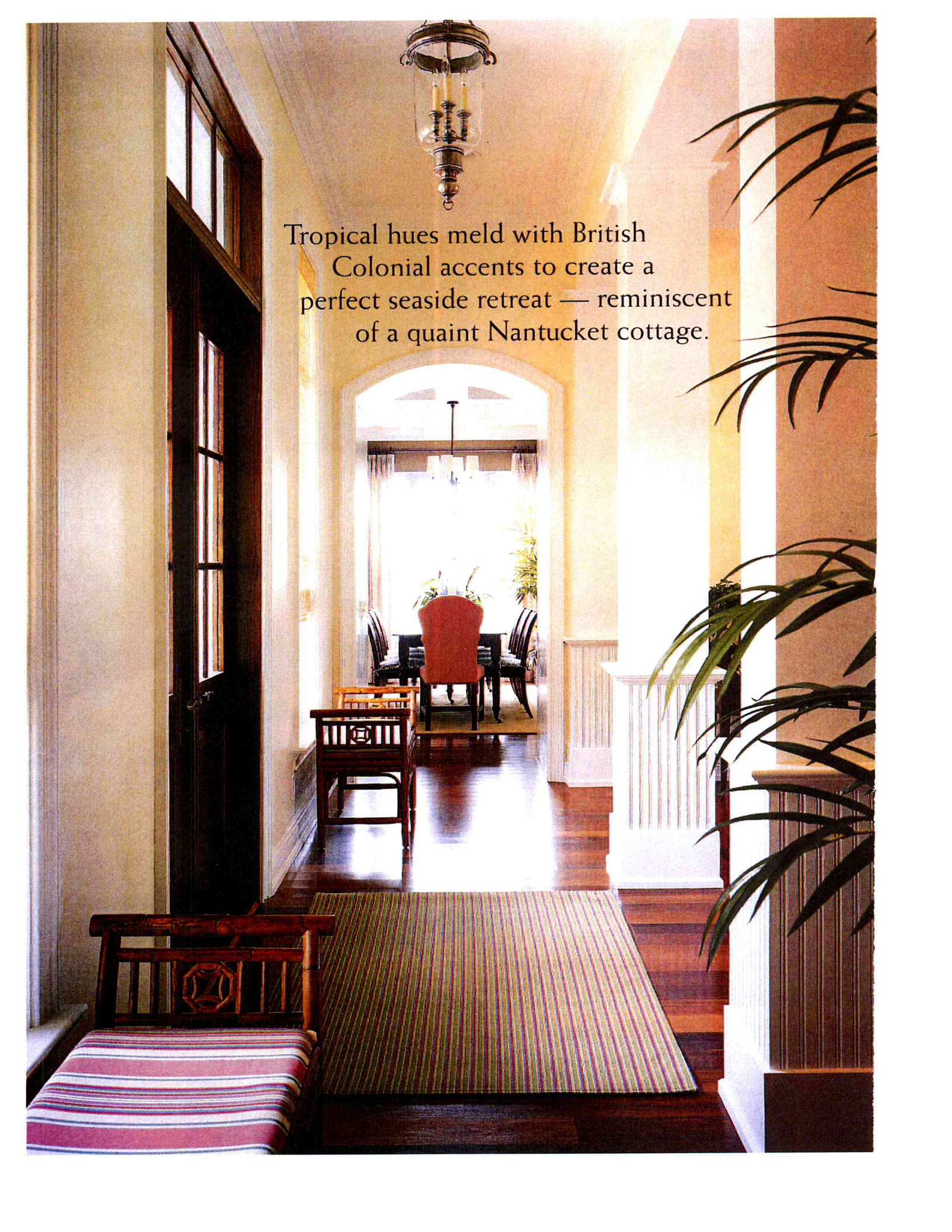
A Vero Beach Vacation Home Combines Picturesque Ocean And River Vistas With A Blending Of Sea-Inspired Hues And British Colonial Accents To Highlight Easy Island Living



The living room reflects the easy comfort of a beach cottage with sea-inspired hues. A duo of off-white linen sofas by Hickory Chair and an ottoman dressed in F. Schumacher's rich mocha fabric center the fireplace, while white custom-designed shelving adds architectural interest.

INTERIOR DESIGN Principal Lisa DeFrances and design assistant Janice Battaglini, L.K. DeFrances & Associates, Inc., Vero Beach, FL  
TEXT Joan McIver  
PHOTOGRAPHY Robert Brantley, Delray Beach, FL

LEFT: Interior designers Lisa DeFrances and Janice Battaglini contrast contemporary and traditional themes in the living room by grouping botanical prints above a casual aqua sofa, a sleek cocktail table of polished nickel and a bergère modernized with Kravet fabric.

A photograph of a hallway with a wooden floor and a striped rug. A wooden chair with a red and white striped seat is in the foreground. In the background, a dining table with a red chair and dark chairs is visible through an arched doorway. A large potted plant is on the right side. A lantern-style light fixture hangs from the ceiling.

Tropical hues meld with British  
Colonial accents to create a  
perfect seaside retreat — reminiscent  
of a quaint Nantucket cottage.

BETWEEN THE ATLANTIC OCEAN and the vast Indian River Lagoon system lies the Palm Island Plantation community of Vero Beach, characteristic of an Old Florida seascape painted in tropical hues. In shaping the scheme of this 3,500-square-foot vacation house with a young family in mind, interior designer Lisa DeFrances and design assistant Janice Battaglini were guided by the area's island setting and inspired by the architecture of a quaint Nantucket cottage.

Creating a beach-friendly atmosphere with enduring materials, the designers chose an island-influenced palette of ocean blues and greens, sandy beige and coral.

BELOW: White wainscoting and mocha-toned wall covering imbue the dining room with British Colonial flavor enhanced by a sisal area rug and Donghia seersucker draperies. The island theme starts in the foyer, left, with a pair of Ficks Reed rattan benches dressed in Samarcand coral-striped fabric.



A striped area rug underscores the blue, white and beige palette in the family room. Woven shades from Design West filter the sunlight pouring through large multi-paned windows. Wicker chairs feature blue-and-white ticking.



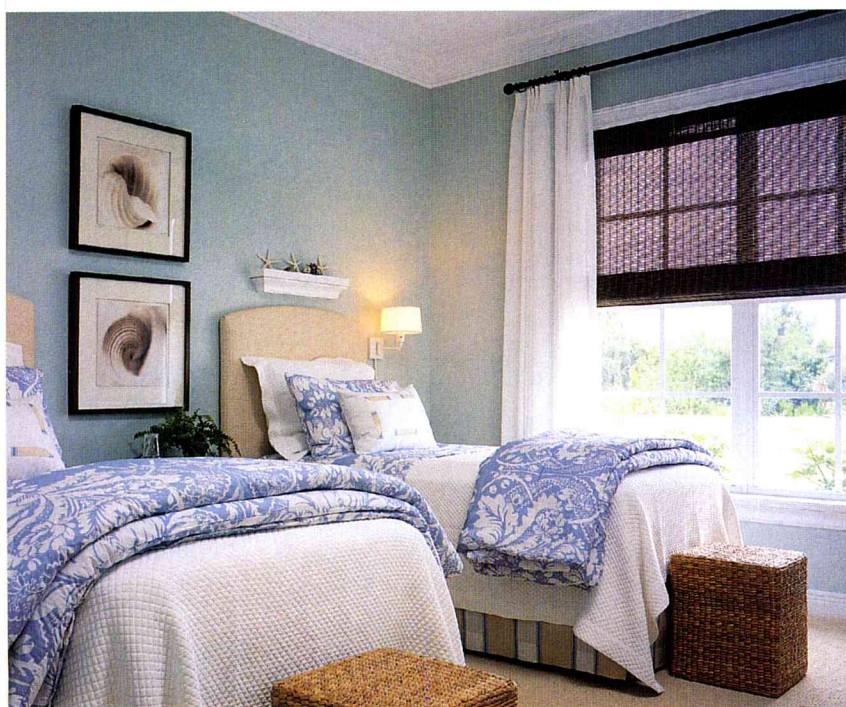
PALM GROVES AND THICKETS OF SEA GRAPE TREES SHADE THIS UPSCALE COMMUNITY — STANDING AS REMNANTS OF VERO BEACH'S HISTORIC JUNGLE TRAIL THAT ONCE RAMBLED ALONG THE NARROW BARRIER ISLAND.

"A young family plans to use this as a vacation retreat," DeFrances says. "So our design is not too formal."

paneling and mocha wall covering with a tiny crosshatch print. "It's traditional yet light and modern," Battaglini says.

Sunlight floods the family room through multi-paned windows framing a poolside view, ensuring an airy environment for the room's mix of beige, blue and white. A pair of plump beige sofas and an oversized cocktail table set a relaxed mood, while easy-care fabrics, such as the blue-striped ticking on a pair of wicker chairs, wear well yet look crisp and stylish.

The family room extends to the kitchen and breakfast area, where "old-fashioned, glass windows in the cabinetry reference a time past," DeFrances says. A green work island adds a splash of sea tones — a stark contrast to the room's pure-white base.



LEFT: Twin beds in the guest room capture the natural environment with rattan headboards and small storage chests made of woven hyacinth at the foot. Seashell prints and starfish perched on white shelving complete the beach cottage feel.

"A young family plans to use this as a vacation retreat," DeFrances says. "So our design is not too formal."

paneling and mocha wall covering with a tiny crosshatch print. "It's traditional yet light and modern," Battaglini says.

Sunlight floods the family room through multi-paned windows framing a poolside view, ensuring an airy environment for the room's mix of beige, blue and white. A pair of plump beige sofas and an oversized cocktail table set a relaxed mood, while easy-care fabrics, such as the blue-striped ticking on a pair of wicker chairs, wear well yet look crisp and stylish.

The family room extends to the kitchen and breakfast area, where "old-fashioned, glass windows in the cabinetry reference a time past," DeFrances says. A green work island adds a splash of sea tones — a stark contrast to the room's pure-white base.



LEFT: Twin beds in the guest room capture the natural environment with rattan headboards and small storage chests made of woven hyacinth at the foot. Seashell prints and starfish perched on white shelving complete the beach cottage feel.



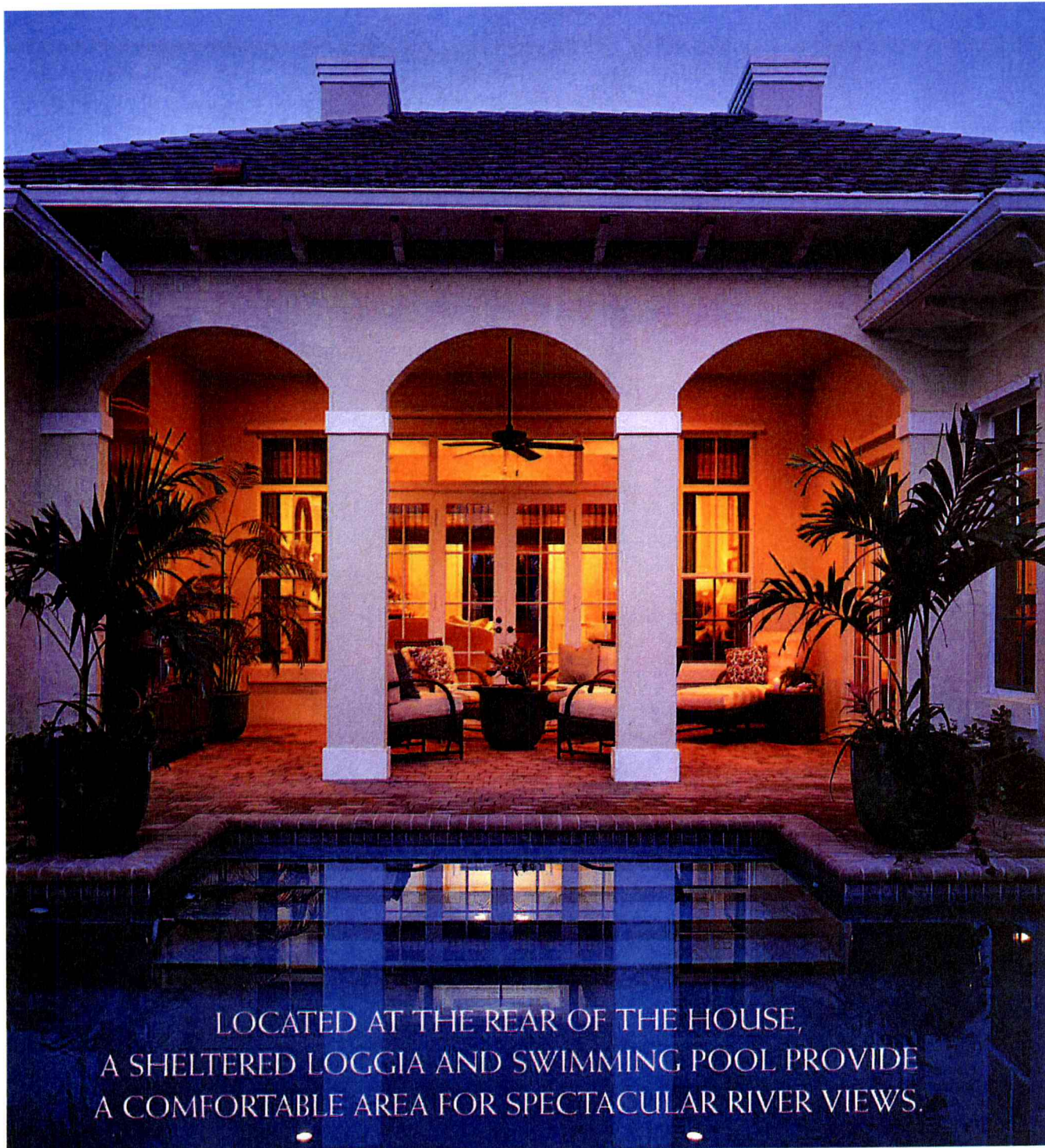
An uncluttered design and a sea-inspired palette create a serene retreat in the master bedroom. White linen draperies from Kravet and tailored blue-and-white linen bed coverings mimic the easygoing nature of the home.



Sea-inspired hues resurface in the guest bedroom, where the designers covered the walls in silvery sage and twin beds in blue and white. In the master bedroom, walls of Carolina blue help create a room that appears as fresh as a salty sea breeze. Fashioned with a bamboo-like design, the poster bed's clean contemporary

lines yield a sculptured silhouette. Teak bedside tables, a rattan bench and a woven shade inject British Colonial accents.

"I think the design reflects a timeless elegance yet at the same time it has the comfort of a cottage," Battaglini says. "The colors are so in tune with the home's location."



LOCATED AT THE REAR OF THE HOUSE,  
A SHELTERED LOGGIA AND SWIMMING POOL PROVIDE  
A COMFORTABLE AREA FOR SPECTACULAR RIVER VIEWS.

#### SOURCES

##### Living Room

Sofas, lounge chair and ottoman - Hickory Chair Co., Hickory, NC  
Ottoman fabric - F. Schumacher & Co., DCOTA, Dania Beach, FL  
Bergère - Oly Studios, Reno, NV  
Bergère cushion and drapery fabrics - Kravet, Inc., Bethpage, NY  
Accent pillows, fireplace, shelving and area rug - Custom designed by L.K. DeFrances & Assoc., Inc., Vero Beach, FL  
Fireplace tiles - Island Tile & Stone, Inc., Vero Beach, FL  
Cocktail table - Global Views, Dallas, TX

Occasional tables, chest, mirror and sculptures on shelving - L.K. DeFrances & Assoc., Inc., Vero Beach, FL  
Chandelier, floor lamp, table lamp to left of aqua sofa and wall lamps - Visual Comfort & Co., Houston, TX  
Table lamp to right of aqua sofa - Remington Lamp, Philadelphia, PA  
Shades - Hartmann & Forbes, Design West, Inc., DCOTA, Dania Beach, FL  
Artwork - Soicher-Marin Fine Art, Hawthorne, CA  
Foyer  
Columns - Custom designed by L.K. DeFrances & Assoc., Inc., Vero Beach, FL  
Benches - Ficks Reed, Cincinnati, OH

Fabric - Samarcand Selections, Inc., Nessen Showroom, DCOTA, Dania Beach, FL  
Light fixture - Visual Comfort & Co., Houston, TX  
Area rug - Merida Meridian, Newark, NJ  
Dining Room  
Table - Bluefish Trading LLC, Marietta, GA  
Host chairs - Hickory Chair Co., Hickory, NC  
Side chairs - L.K. DeFrances & Assoc., Inc., Vero Beach, FL  
Fabric - Home Couture, Inc., Design West, Inc., DCOTA, Dania Beach, FL  
Console - Canterbury Antiques, Ltd., Atlanta, GA  
Chandelier - Visual Comfort & Co., Houston, TX  
Hurricane lamps - Interlude Home, Inc., Trumbull, CT